

CPST

Test Report

No. C190220048001

Date: Feb 25, 2019

Page 1 of 20

Applicant: ShenZhen Hello 3D Technology Co.,Ltd.

Applicant Address: 2F, Block 50, 2ND Industry Zone, Xitian, Gongming Street, Guangming New District, ShenZhen, China.

The following samples were submitted and identified on behalf of the clients as

Sample Name: Please refer to next page(s).
Model: Please refer to next page(s).
CPST Internal Reference No.: C190220048
Sample Received Date: Feb 20, 2019
Test Period: Feb 20, 2019 to Feb 25, 2019
Test Method: Please refer to next page(s).
Test Result: Please refer to next page(s).

CONCLUSION :

<u>TESTED SAMPLES</u>	<u>TEST ITEM</u>	<u>RESULT</u>
Please refer to next page(s).	1.RoHS Directive 2011/65/EU Annex II amending Annex (EU)2015/863 and amending Annex (EU)2017/2102	
	— Lead, Cadmium, Mercury, Hexavalent Chromium, PBBs and PBDEs Content	PASS
	—Di-(2-ethylhexyl) phthalate(DEHP), Benzylbutyl phthalate(BBP), Dibutyl phthalate (DBP), Diisobutyl phthalate(DIBP) Content	PASS



Signed for and on behalf of
Eurones Consumer Products Testing Service Co., Ltd

TESTED BY :

REVIEWED BY:

APPROVED BY:

Andy Wang

Sunshine Liu

Will Pan

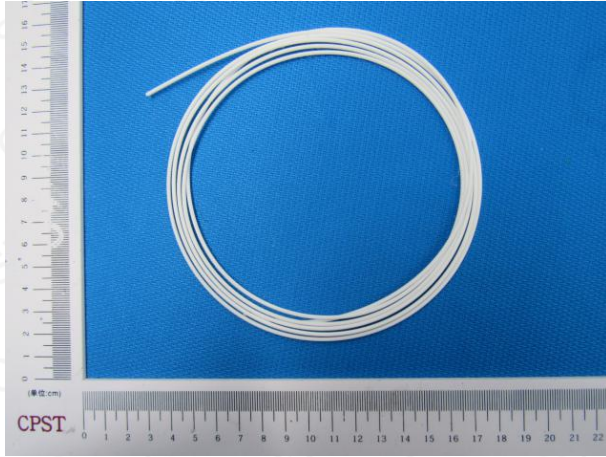
Wang Guang Yu, Andy
Project Leader

Liu Xiao Fang, Sunshine
Report Reviewer

Pan Jian Ding, Will
Technical Supervisor

This Test Report is issued by the Company subject to its General Conditions of Service printed overleaf or available on request and accessible at www.cpstlab.com. Attention is drawn to the limitations of liability, indemnification and jurisdictional issues defined therein. Unless otherwise stated the results shown in the test report refer only to the sample(s) tested. This test report cannot be reproduced, except in full, without prior written permission of the Company. Any unauthorized alteration, forgery or falsification of the content or appearance of this report is unlawful and offenders may be prosecuted to the fullest extent of the law.

Photo of the Submitted Sample



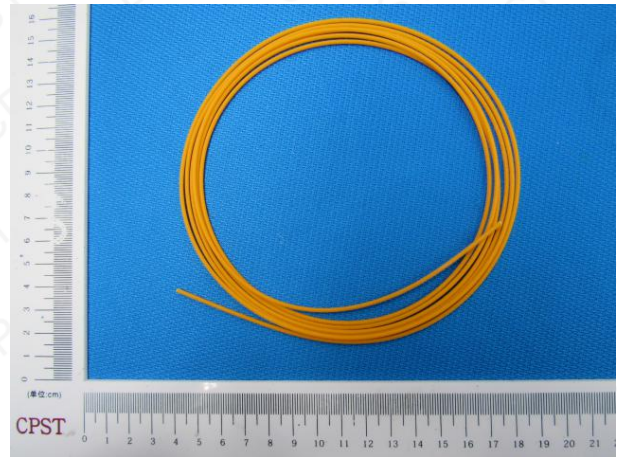
No.1



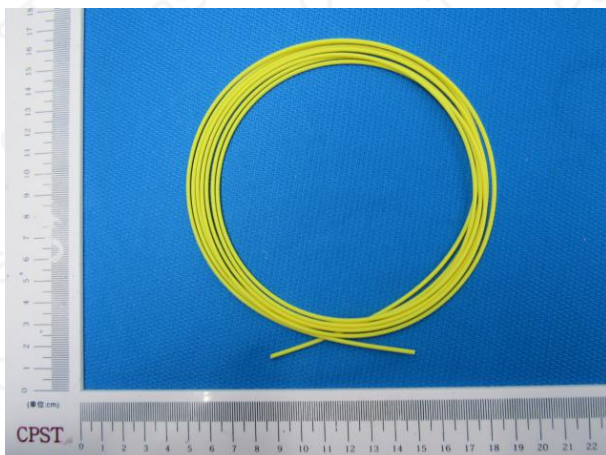
No.2



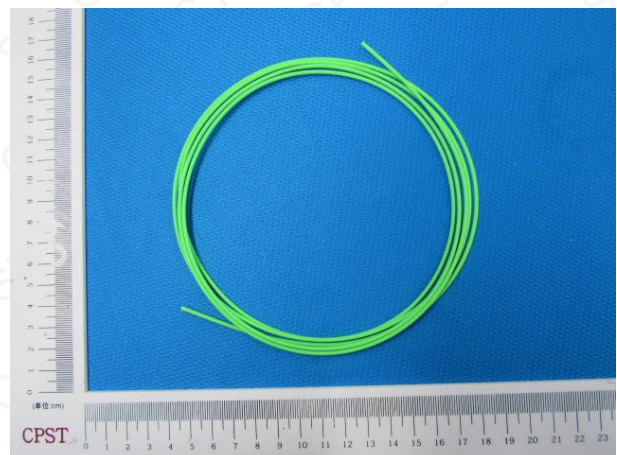
No.3



No.4



No.5



No.6

This Test Report is issued by the Company subject to its General Conditions of Service printed overleaf or available on request and accessible at www.cpstlab.com. Attention is drawn to the limitations of liability, indemnification and jurisdictional issues defined therein. Unless otherwise stated the results shown in the test report refer only to the sample(s) tested. This test report cannot be reproduced, except in full, without prior written permission of the Company. Any unauthorized alteration, forgery or falsification of the content or appearance of this report is unlawful and offenders may be prosecuted to the fullest extent of the law.

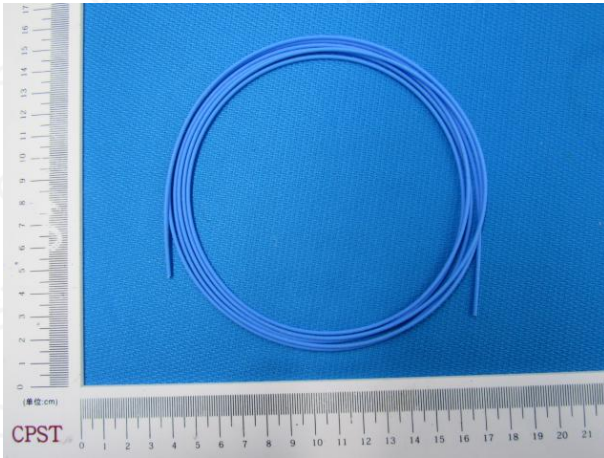
CPST

Test Report

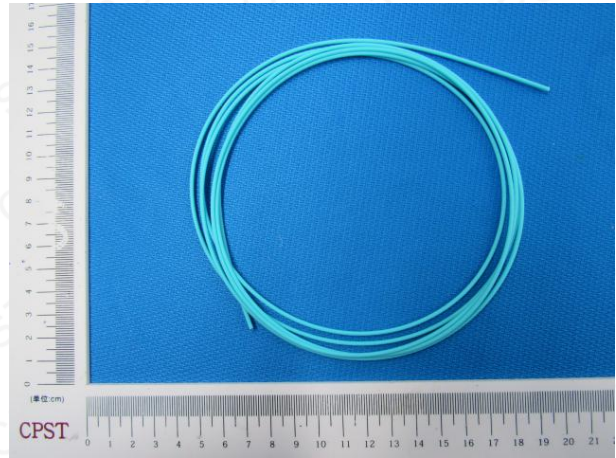
No. C190220048001

Date: Feb 25, 2019

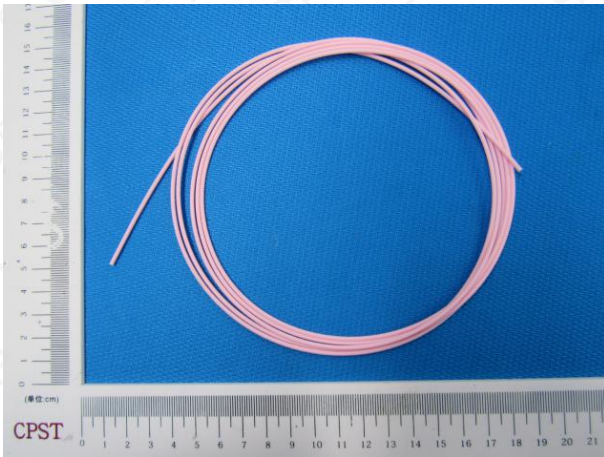
Page 3 of 20



No.7



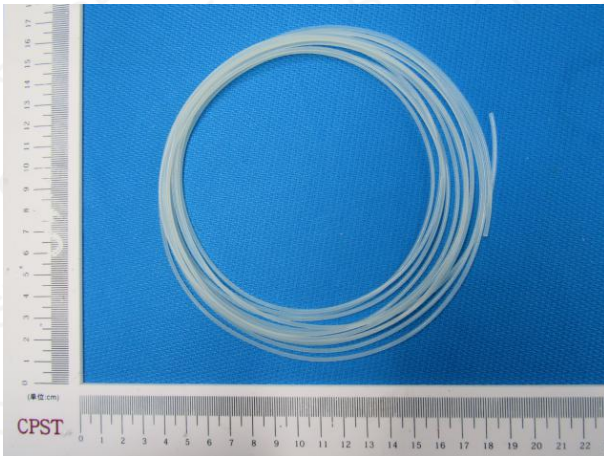
No.8



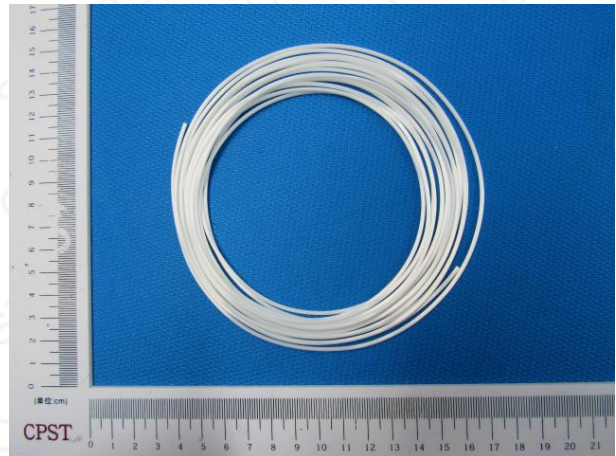
No.9



No.10



No.11



No.12

This Test Report is issued by the Company subject to its General Conditions of Service printed overleaf or available on request and accessible at www.cpstlab.com. Attention is drawn to the limitations of liability, indemnification and jurisdictional issues defined therein. Unless otherwise stated the results shown in the test report refer only to the sample(s) tested. This test report cannot be reproduced, except in full, without prior written permission of the Company. Any unauthorized alteration, forgery or falsification of the content or appearance of this report is unlawful and offenders may be prosecuted to the fullest extent of the law.

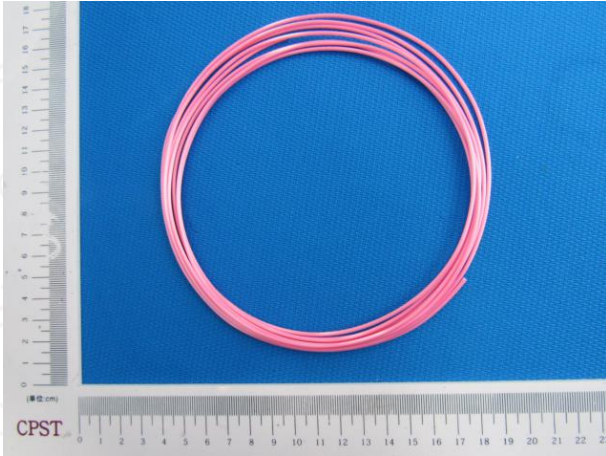
CPST

Test Report

No. C190220048001

Date: Feb 25, 2019

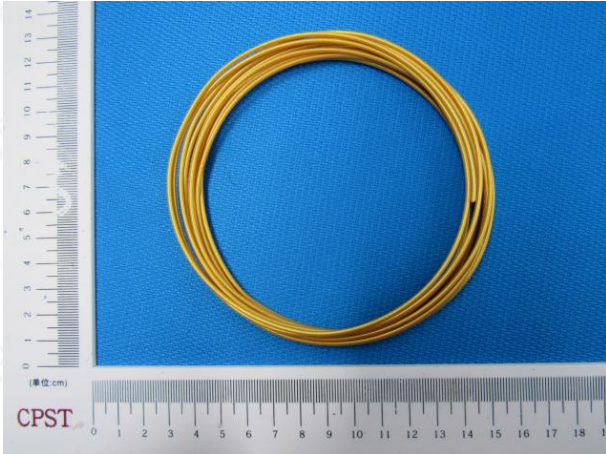
Page 4 of 20



No.13



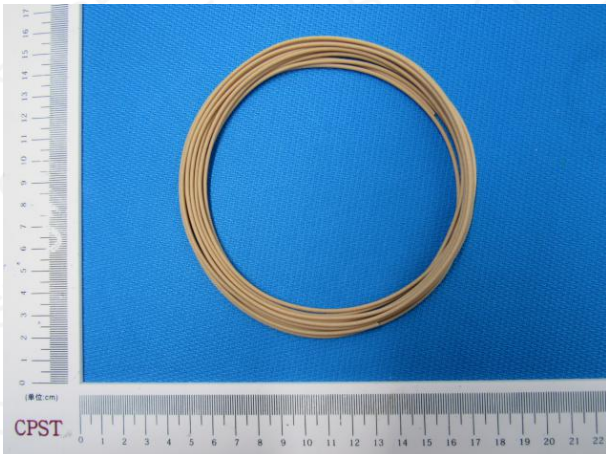
No.14



No.15



No.16

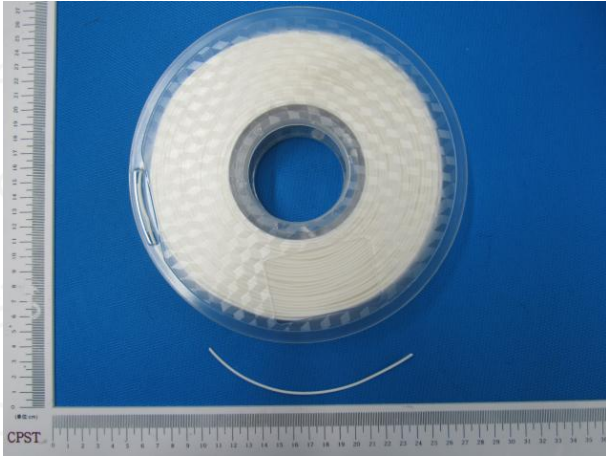


No.17



No.18

This Test Report is issued by the Company subject to its General Conditions of Service printed overleaf or available on request and accessible at www.cpstlab.com. Attention is drawn to the limitations of liability, indemnification and jurisdictional issues defined therein. Unless otherwise stated the results shown in the test report refer only to the sample(s) tested. This test report cannot be reproduced, except in full, without prior written permission of the Company. Any unauthorized alteration, forgery or falsification of the content or appearance of this report is unlawful and offenders may be prosecuted to the fullest extent of the law.



No.19

Sample List:

No	Sample Name	Model	Description of Specimen
1	FILAMENT-WHT-C	PLA D1.75 WHITE02 0001	White wire
2	FILAMENT-BLK-C	PLA D1.75 BLACK 0002	Black wire
3	FILAMENT-RED-C	PLA D1.75 RED 0003	Red wire
4	FILAMENT-ORG-C	PLA D1.75 ORANGE 0004	Orange wire
5	FILAMENT-YEL-C	PLA D1.75 YELLOW 0005	Yellow wire
6	FILAMENT-GRN-C	PLA D1.75 GREEN 0006	Green wire
7	FILAMENT-BLU-C	PLA D1.75 BLUE 0007	Blue wire
8	FILAMENT-SKY-C	PLA D1.75 SKY BLUE 0008	Sky blue wire
9	FILAMENT-PNK-C	PLA D1.75 PINK 0009	Pink wire
10	FILAMENT-BRN-C	PLA D1.75 BROWN 0010	Brown wire
11	FILAMENT-GITD-C	PLA D1.75 LUMINOUS GREEN 0011	Luminous green wire
12	FILAMENT-SWHT-C	PLA D1.75 SILK WHITE 0012	Silk white wire
13	FILAMENT-SPNK-C	PLA D1.75 SILK PINK 0013	Silk pink wire
14	FILAMENT-SVR-C	PLA D1.75 SILK SILVER GREY 0014	Silk silver grey wire
15	FILAMENT-GOLD-C	PLA D1.75 GOLD 0015	Gold wire
16	FILAMENT-BRZ-C	PLA D1.75 FROSTED BRONZE 0016	Frosted bronze wire
17	FILAMENT-WOOD-C	PLA D1.75 WOOD 0017	Wood wire
18	FILAMENT-MARB-C	PLA D1.75 MARBLE WHITE 0018	MARBLE white wire
19	Reel	Reel	Transparent reel (except wire)

This Test Report is issued by the Company subject to its General Conditions of Service printed overleaf or available on request and accessible at www.cpstlab.com. Attention is drawn to the limitations of liability, indemnification and jurisdictional issues defined therein. Unless otherwise stated the results shown in the test report refer only to the sample(s) tested. This test report cannot be reproduced, except in full, without prior written permission of the Company. Any unauthorized alteration, forgery or falsification of the content or appearance of this report is unlawful and offenders may be prosecuted to the fullest extent of the law.

Test Result(s):

1. Lead, Cadmium, Mercury, Hexavalent Chromium, PBBs and PBDEs—RoHS Directive 2011/65/EU Annex II amending Annex (EU)2015/863 and amending Annex (EU)2017/2102

Test Items	Unit	Test Method	Result		MDL	Limit
			No.1	No.2		
Lead (Pb)	mg/kg	IEC 62321-5:2013, ICP-OES	N.D.	N.D.	2	1000
Mercury (Hg)	mg/kg	IEC 62321-4:2013+A1:2017, ICP-OES	N.D.	N.D.	2	1000
Cadmium(Cd)	mg/kg	IEC 62321-5:2013, ICP-OES	N.D.	N.D.	2	100
Hexavalent Chromium (CrVI)	mg/kg	IEC 62321-7-2:2017, UV-VIS	N.D.	N.D.	2	1000
Monobromobiphenyl	mg/kg	IEC 62321-6:2015, GC-MS	N.D.	N.D.	5	-
Dibromobiphenyl	mg/kg	IEC 62321-6:2015, GC-MS	N.D.	N.D.	5	-
Tribromobiphenyl	mg/kg	IEC 62321-6:2015, GC-MS	N.D.	N.D.	5	-
Tetrabromobiphenyl	mg/kg	IEC 62321-6:2015, GC-MS	N.D.	N.D.	5	-
Pentabromobiphenyl	mg/kg	IEC 62321-6:2015, GC-MS	N.D.	N.D.	5	-
Hexabromobiphenyl	mg/kg	IEC 62321-6:2015, GC-MS	N.D.	N.D.	5	-
Heptabromobiphenyl	mg/kg	IEC 62321-6:2015, GC-MS	N.D.	N.D.	5	-
Octabromobiphenyl	mg/kg	IEC 62321-6:2015, GC-MS	N.D.	N.D.	5	-
Nonabromobiphenyl	mg/kg	IEC 62321-6:2015, GC-MS	N.D.	N.D.	5	-
Decabromobiphenyl	mg/kg	IEC 62321-6:2015, GC-MS	N.D.	N.D.	5	-
Sum of PBBs	mg/kg	-	N.D.	N.D.	-	1000
Monobromodiphenyl ether	mg/kg	IEC 62321-6:2015, GC-MS	N.D.	N.D.	5	-
Dibromodiphenyl ether	mg/kg	IEC 62321-6:2015, GC-MS	N.D.	N.D.	5	-
Tribromodiphenyl ether	mg/kg	IEC 62321-6:2015, GC-MS	N.D.	N.D.	5	-
Tetrabromodiphenyl ether	mg/kg	IEC 62321-6:2015, GC-MS	N.D.	N.D.	5	-
Pentabromodiphenyl ether	mg/kg	IEC 62321-6:2015, GC-MS	N.D.	N.D.	5	-
Hexabromodiphenyl ether	mg/kg	IEC 62321-6:2015, GC-MS	N.D.	N.D.	5	-
Heptabromodiphenyl ether	mg/kg	IEC 62321-6:2015, GC-MS	N.D.	N.D.	5	-
Octabromodiphenyl ether	mg/kg	IEC 62321-6:2015, GC-MS	N.D.	N.D.	5	-
Nonabromodiphenyl ether	mg/kg	IEC 62321-6:2015, GC-MS	N.D.	N.D.	5	-
Decabromodiphenyl ether	mg/kg	IEC 62321-6:2015, GC-MS	N.D.	N.D.	5	-
Sum of PBDEs	mg/kg	-	N.D.	N.D.	-	1000

This Test Report is issued by the Company subject to its General Conditions of Service printed overleaf or available on request and accessible at www.cpstlab.com. Attention is drawn to the limitations of liability, indemnification and jurisdictional issues defined therein. Unless otherwise stated the results shown in the test report refer only to the sample(s) tested. This test report cannot be reproduced, except in full, without prior written permission of the Company. Any unauthorized alteration, forgery or falsification of the content or appearance of this report is unlawful and offenders may be prosecuted to the fullest extent of the law.

Test Items	Unit	Test Method	Result		MDL	Limit
			No.3	No.4		
Lead (Pb)	mg/kg	IEC 62321-5:2013, ICP-OES	N.D.	N.D.	2	1000
Mercury (Hg)	mg/kg	IEC 62321-4:2013+A1:2017, ICP-OES	N.D.	N.D.	2	1000
Cadmium(Cd)	mg/kg	IEC 62321-5:2013, ICP-OES	N.D.	N.D.	2	100
Hexavalent Chromium (CrVI)	mg/kg	IEC 62321-7-2:2017, UV-VIS	N.D.	N.D.	2	1000
Monobromobiphenyl	mg/kg	IEC 62321-6:2015, GC-MS	N.D.	N.D.	5	-
Dibromobiphenyl	mg/kg	IEC 62321-6:2015, GC-MS	N.D.	N.D.	5	-
Tribromobiphenyl	mg/kg	IEC 62321-6:2015, GC-MS	N.D.	N.D.	5	-
Tetrabromobiphenyl	mg/kg	IEC 62321-6:2015, GC-MS	N.D.	N.D.	5	-
Pentabromobiphenyl	mg/kg	IEC 62321-6:2015, GC-MS	N.D.	N.D.	5	-
Hexabromobiphenyl	mg/kg	IEC 62321-6:2015, GC-MS	N.D.	N.D.	5	-
Heptabromobiphenyl	mg/kg	IEC 62321-6:2015, GC-MS	N.D.	N.D.	5	-
Octabromobiphenyl	mg/kg	IEC 62321-6:2015, GC-MS	N.D.	N.D.	5	-
Nonabromobiphenyl	mg/kg	IEC 62321-6:2015, GC-MS	N.D.	N.D.	5	-
Decabromobiphenyl	mg/kg	IEC 62321-6:2015, GC-MS	N.D.	N.D.	5	-
Sum of PBBs	mg/kg	-	N.D.	N.D.	-	1000
Monobromodiphenyl ether	mg/kg	IEC 62321-6:2015, GC-MS	N.D.	N.D.	5	-
Dibromodiphenyl ether	mg/kg	IEC 62321-6:2015, GC-MS	N.D.	N.D.	5	-
Tribromodiphenyl ether	mg/kg	IEC 62321-6:2015, GC-MS	N.D.	N.D.	5	-
Tetrabromodiphenyl ether	mg/kg	IEC 62321-6:2015, GC-MS	N.D.	N.D.	5	-
Pentabromodiphenyl ether	mg/kg	IEC 62321-6:2015, GC-MS	N.D.	N.D.	5	-
Hexabromodiphenyl ether	mg/kg	IEC 62321-6:2015, GC-MS	N.D.	N.D.	5	-
Heptabromodiphenyl ether	mg/kg	IEC 62321-6:2015, GC-MS	N.D.	N.D.	5	-
Octabromodiphenyl ether	mg/kg	IEC 62321-6:2015, GC-MS	N.D.	N.D.	5	-
Nonabromodiphenyl ether	mg/kg	IEC 62321-6:2015, GC-MS	N.D.	N.D.	5	-
Decabromodiphenyl ether	mg/kg	IEC 62321-6:2015, GC-MS	N.D.	N.D.	5	-
Sum of PBDEs	mg/kg	-	N.D.	N.D.	-	1000

This Test Report is issued by the Company subject to its General Conditions of Service printed overleaf or available on request and accessible at www.cpstlab.com. Attention is drawn to the limitations of liability, indemnification and jurisdictional issues defined therein. Unless otherwise stated the results shown in the test report refer only to the sample(s) tested. This test report cannot be reproduced, except in full, without prior written permission of the Company. Any unauthorized alteration, forgery or falsification of the content or appearance of this report is unlawful and offenders may be prosecuted to the fullest extent of the law.

Test Items	Unit	Test Method	Result		MDL	Limit
			No.5	No.6		
Lead (Pb)	mg/kg	IEC 62321-5:2013, ICP-OES	N.D.	N.D.	2	1000
Mercury (Hg)	mg/kg	IEC 62321-4:2013+A1:2017, ICP-OES	N.D.	N.D.	2	1000
Cadmium(Cd)	mg/kg	IEC 62321-5:2013, ICP-OES	N.D.	N.D.	2	100
Hexavalent Chromium (CrVI)	mg/kg	IEC 62321-7-2:2017, UV-VIS	N.D.	N.D.	2	1000
Monobromobiphenyl	mg/kg	IEC 62321-6:2015, GC-MS	N.D.	N.D.	5	-
Dibromobiphenyl	mg/kg	IEC 62321-6:2015, GC-MS	N.D.	N.D.	5	-
Tribromobiphenyl	mg/kg	IEC 62321-6:2015, GC-MS	N.D.	N.D.	5	-
Tetrabromobiphenyl	mg/kg	IEC 62321-6:2015, GC-MS	N.D.	N.D.	5	-
Pentabromobiphenyl	mg/kg	IEC 62321-6:2015, GC-MS	N.D.	N.D.	5	-
Hexabromobiphenyl	mg/kg	IEC 62321-6:2015, GC-MS	N.D.	N.D.	5	-
Heptabromobiphenyl	mg/kg	IEC 62321-6:2015, GC-MS	N.D.	N.D.	5	-
Octabromobiphenyl	mg/kg	IEC 62321-6:2015, GC-MS	N.D.	N.D.	5	-
Nonabromobiphenyl	mg/kg	IEC 62321-6:2015, GC-MS	N.D.	N.D.	5	-
Decabromobiphenyl	mg/kg	IEC 62321-6:2015, GC-MS	N.D.	N.D.	5	-
Sum of PBBs	mg/kg	-	N.D.	N.D.	-	1000
Monobromodiphenyl ether	mg/kg	IEC 62321-6:2015, GC-MS	N.D.	N.D.	5	-
Dibromodiphenyl ether	mg/kg	IEC 62321-6:2015, GC-MS	N.D.	N.D.	5	-
Tribromodiphenyl ether	mg/kg	IEC 62321-6:2015, GC-MS	N.D.	N.D.	5	-
Tetrabromodiphenyl ether	mg/kg	IEC 62321-6:2015, GC-MS	N.D.	N.D.	5	-
Pentabromodiphenyl ether	mg/kg	IEC 62321-6:2015, GC-MS	N.D.	N.D.	5	-
Hexabromodiphenyl ether	mg/kg	IEC 62321-6:2015, GC-MS	N.D.	N.D.	5	-
Heptabromodiphenyl ether	mg/kg	IEC 62321-6:2015, GC-MS	N.D.	N.D.	5	-
Octabromodiphenyl ether	mg/kg	IEC 62321-6:2015, GC-MS	N.D.	N.D.	5	-
Nonabromodiphenyl ether	mg/kg	IEC 62321-6:2015, GC-MS	N.D.	N.D.	5	-
Decabromodiphenyl ether	mg/kg	IEC 62321-6:2015, GC-MS	N.D.	N.D.	5	-
Sum of PBDEs	mg/kg	-	N.D.	N.D.	-	1000

This Test Report is issued by the Company subject to its General Conditions of Service printed overleaf or available on request and accessible at www.cpstlab.com. Attention is drawn to the limitations of liability, indemnification and jurisdictional issues defined therein. Unless otherwise stated the results shown in the test report refer only to the sample(s) tested. This test report cannot be reproduced, except in full, without prior written permission of the Company. Any unauthorized alteration, forgery or falsification of the content or appearance of this report is unlawful and offenders may be prosecuted to the fullest extent of the law.

Test Items	Unit	Test Method	Result		MDL	Limit
			No.7	No.8		
Lead (Pb)	mg/kg	IEC 62321-5:2013, ICP-OES	N.D.	N.D.	2	1000
Mercury (Hg)	mg/kg	IEC 62321-4:2013+A1:2017, ICP-OES	N.D.	N.D.	2	1000
Cadmium(Cd)	mg/kg	IEC 62321-5:2013, ICP-OES	N.D.	N.D.	2	100
Hexavalent Chromium (CrVI)	mg/kg	IEC 62321-7-2:2017, UV-VIS	N.D.	N.D.	2	1000
Monobromobiphenyl	mg/kg	IEC 62321-6:2015, GC-MS	N.D.	N.D.	5	-
Dibromobiphenyl	mg/kg	IEC 62321-6:2015, GC-MS	N.D.	N.D.	5	-
Tribromobiphenyl	mg/kg	IEC 62321-6:2015, GC-MS	N.D.	N.D.	5	-
Tetrabromobiphenyl	mg/kg	IEC 62321-6:2015, GC-MS	N.D.	N.D.	5	-
Pentabromobiphenyl	mg/kg	IEC 62321-6:2015, GC-MS	N.D.	N.D.	5	-
Hexabromobiphenyl	mg/kg	IEC 62321-6:2015, GC-MS	N.D.	N.D.	5	-
Heptabromobiphenyl	mg/kg	IEC 62321-6:2015, GC-MS	N.D.	N.D.	5	-
Octabromobiphenyl	mg/kg	IEC 62321-6:2015, GC-MS	N.D.	N.D.	5	-
Nonabromobiphenyl	mg/kg	IEC 62321-6:2015, GC-MS	N.D.	N.D.	5	-
Decabromobiphenyl	mg/kg	IEC 62321-6:2015, GC-MS	N.D.	N.D.	5	-
Sum of PBBs	mg/kg	-	N.D.	N.D.	-	1000
Monobromodiphenyl ether	mg/kg	IEC 62321-6:2015, GC-MS	N.D.	N.D.	5	-
Dibromodiphenyl ether	mg/kg	IEC 62321-6:2015, GC-MS	N.D.	N.D.	5	-
Tribromodiphenyl ether	mg/kg	IEC 62321-6:2015, GC-MS	N.D.	N.D.	5	-
Tetrabromodiphenyl ether	mg/kg	IEC 62321-6:2015, GC-MS	N.D.	N.D.	5	-
Pentabromodiphenyl ether	mg/kg	IEC 62321-6:2015, GC-MS	N.D.	N.D.	5	-
Hexabromodiphenyl ether	mg/kg	IEC 62321-6:2015, GC-MS	N.D.	N.D.	5	-
Heptabromodiphenyl ether	mg/kg	IEC 62321-6:2015, GC-MS	N.D.	N.D.	5	-
Octabromodiphenyl ether	mg/kg	IEC 62321-6:2015, GC-MS	N.D.	N.D.	5	-
Nonabromodiphenyl ether	mg/kg	IEC 62321-6:2015, GC-MS	N.D.	N.D.	5	-
Decabromodiphenyl ether	mg/kg	IEC 62321-6:2015, GC-MS	N.D.	N.D.	5	-
Sum of PBDEs	mg/kg	-	N.D.	N.D.	-	1000

This Test Report is issued by the Company subject to its General Conditions of Service printed overleaf or available on request and accessible at www.cpstlab.com. Attention is drawn to the limitations of liability, indemnification and jurisdictional issues defined therein. Unless otherwise stated the results shown in the test report refer only to the sample(s) tested. This test report cannot be reproduced, except in full, without prior written permission of the Company. Any unauthorized alteration, forgery or falsification of the content or appearance of this report is unlawful and offenders may be prosecuted to the fullest extent of the law.

Test Items	Unit	Test Method	Result		MDL	Limit
			No.9	No.10		
Lead (Pb)	mg/kg	IEC 62321-5:2013, ICP-OES	N.D.	N.D.	2	1000
Mercury (Hg)	mg/kg	IEC 62321-4:2013+A1:2017, ICP-OES	N.D.	N.D.	2	1000
Cadmium(Cd)	mg/kg	IEC 62321-5:2013, ICP-OES	N.D.	N.D.	2	100
Hexavalent Chromium (CrVI)	mg/kg	IEC 62321-7-2:2017, UV-VIS	N.D.	N.D.	2	1000
Monobromobiphenyl	mg/kg	IEC 62321-6:2015, GC-MS	N.D.	N.D.	5	-
Dibromobiphenyl	mg/kg	IEC 62321-6:2015, GC-MS	N.D.	N.D.	5	-
Tribromobiphenyl	mg/kg	IEC 62321-6:2015, GC-MS	N.D.	N.D.	5	-
Tetrabromobiphenyl	mg/kg	IEC 62321-6:2015, GC-MS	N.D.	N.D.	5	-
Pentabromobiphenyl	mg/kg	IEC 62321-6:2015, GC-MS	N.D.	N.D.	5	-
Hexabromobiphenyl	mg/kg	IEC 62321-6:2015, GC-MS	N.D.	N.D.	5	-
Heptabromobiphenyl	mg/kg	IEC 62321-6:2015, GC-MS	N.D.	N.D.	5	-
Octabromobiphenyl	mg/kg	IEC 62321-6:2015, GC-MS	N.D.	N.D.	5	-
Nonabromobiphenyl	mg/kg	IEC 62321-6:2015, GC-MS	N.D.	N.D.	5	-
Decabromobiphenyl	mg/kg	IEC 62321-6:2015, GC-MS	N.D.	N.D.	5	-
Sum of PBBs	mg/kg	-	N.D.	N.D.	-	1000
Monobromodiphenyl ether	mg/kg	IEC 62321-6:2015, GC-MS	N.D.	N.D.	5	-
Dibromodiphenyl ether	mg/kg	IEC 62321-6:2015, GC-MS	N.D.	N.D.	5	-
Tribromodiphenyl ether	mg/kg	IEC 62321-6:2015, GC-MS	N.D.	N.D.	5	-
Tetrabromodiphenyl ether	mg/kg	IEC 62321-6:2015, GC-MS	N.D.	N.D.	5	-
Pentabromodiphenyl ether	mg/kg	IEC 62321-6:2015, GC-MS	N.D.	N.D.	5	-
Hexabromodiphenyl ether	mg/kg	IEC 62321-6:2015, GC-MS	N.D.	N.D.	5	-
Heptabromodiphenyl ether	mg/kg	IEC 62321-6:2015, GC-MS	N.D.	N.D.	5	-
Octabromodiphenyl ether	mg/kg	IEC 62321-6:2015, GC-MS	N.D.	N.D.	5	-
Nonabromodiphenyl ether	mg/kg	IEC 62321-6:2015, GC-MS	N.D.	N.D.	5	-
Decabromodiphenyl ether	mg/kg	IEC 62321-6:2015, GC-MS	N.D.	N.D.	5	-
Sum of PBDEs	mg/kg	-	N.D.	N.D.	-	1000

This Test Report is issued by the Company subject to its General Conditions of Service printed overleaf or available on request and accessible at www.cpstlab.com. Attention is drawn to the limitations of liability, indemnification and jurisdictional issues defined therein. Unless otherwise stated the results shown in the test report refer only to the sample(s) tested. This test report cannot be reproduced, except in full, without prior written permission of the Company. Any unauthorized alteration, forgery or falsification of the content or appearance of this report is unlawful and offenders may be prosecuted to the fullest extent of the law.

Test Items	Unit	Test Method	Result		MDL	Limit
			No.11	No.12		
Lead (Pb)	mg/kg	IEC 62321-5:2013, ICP-OES	N.D.	N.D.	2	1000
Mercury (Hg)	mg/kg	IEC 62321-4:2013+A1:2017, ICP-OES	N.D.	N.D.	2	1000
Cadmium(Cd)	mg/kg	IEC 62321-5:2013, ICP-OES	N.D.	N.D.	2	100
Hexavalent Chromium (CrVI)	mg/kg	IEC 62321-7-2:2017, UV-VIS	N.D.	N.D.	2	1000
Monobromobiphenyl	mg/kg	IEC 62321-6:2015, GC-MS	N.D.	N.D.	5	-
Dibromobiphenyl	mg/kg	IEC 62321-6:2015, GC-MS	N.D.	N.D.	5	-
Tribromobiphenyl	mg/kg	IEC 62321-6:2015, GC-MS	N.D.	N.D.	5	-
Tetrabromobiphenyl	mg/kg	IEC 62321-6:2015, GC-MS	N.D.	N.D.	5	-
Pentabromobiphenyl	mg/kg	IEC 62321-6:2015, GC-MS	N.D.	N.D.	5	-
Hexabromobiphenyl	mg/kg	IEC 62321-6:2015, GC-MS	N.D.	N.D.	5	-
Heptabromobiphenyl	mg/kg	IEC 62321-6:2015, GC-MS	N.D.	N.D.	5	-
Octabromobiphenyl	mg/kg	IEC 62321-6:2015, GC-MS	N.D.	N.D.	5	-
Nonabromobiphenyl	mg/kg	IEC 62321-6:2015, GC-MS	N.D.	N.D.	5	-
Decabromobiphenyl	mg/kg	IEC 62321-6:2015, GC-MS	N.D.	N.D.	5	-
Sum of PBBs	mg/kg	-	N.D.	N.D.	-	1000
Monobromodiphenyl ether	mg/kg	IEC 62321-6:2015, GC-MS	N.D.	N.D.	5	-
Dibromodiphenyl ether	mg/kg	IEC 62321-6:2015, GC-MS	N.D.	N.D.	5	-
Tribromodiphenyl ether	mg/kg	IEC 62321-6:2015, GC-MS	N.D.	N.D.	5	-
Tetrabromodiphenyl ether	mg/kg	IEC 62321-6:2015, GC-MS	N.D.	N.D.	5	-
Pentabromodiphenyl ether	mg/kg	IEC 62321-6:2015, GC-MS	N.D.	N.D.	5	-
Hexabromodiphenyl ether	mg/kg	IEC 62321-6:2015, GC-MS	N.D.	N.D.	5	-
Heptabromodiphenyl ether	mg/kg	IEC 62321-6:2015, GC-MS	N.D.	N.D.	5	-
Octabromodiphenyl ether	mg/kg	IEC 62321-6:2015, GC-MS	N.D.	N.D.	5	-
Nonabromodiphenyl ether	mg/kg	IEC 62321-6:2015, GC-MS	N.D.	N.D.	5	-
Decabromodiphenyl ether	mg/kg	IEC 62321-6:2015, GC-MS	N.D.	N.D.	5	-
Sum of PBDEs	mg/kg	-	N.D.	N.D.	-	1000

This Test Report is issued by the Company subject to its General Conditions of Service printed overleaf or available on request and accessible at www.cpstlab.com. Attention is drawn to the limitations of liability, indemnification and jurisdictional issues defined therein. Unless otherwise stated the results shown in the test report refer only to the sample(s) tested. This test report cannot be reproduced, except in full, without prior written permission of the Company. Any unauthorized alteration, forgery or falsification of the content or appearance of this report is unlawful and offenders may be prosecuted to the fullest extent of the law.

Test Items	Unit	Test Method	Result		MDL	Limit
			No.13	No.14		
Lead (Pb)	mg/kg	IEC 62321-5:2013, ICP-OES	N.D.	N.D.	2	1000
Mercury (Hg)	mg/kg	IEC 62321-4:2013+A1:2017, ICP-OES	N.D.	N.D.	2	1000
Cadmium(Cd)	mg/kg	IEC 62321-5:2013, ICP-OES	N.D.	N.D.	2	100
Hexavalent Chromium (CrVI)	mg/kg	IEC 62321-7-2:2017, UV-VIS	N.D.	N.D.	2	1000
Monobromobiphenyl	mg/kg	IEC 62321-6:2015, GC-MS	N.D.	N.D.	5	-
Dibromobiphenyl	mg/kg	IEC 62321-6:2015, GC-MS	N.D.	N.D.	5	-
Tribromobiphenyl	mg/kg	IEC 62321-6:2015, GC-MS	N.D.	N.D.	5	-
Tetrabromobiphenyl	mg/kg	IEC 62321-6:2015, GC-MS	N.D.	N.D.	5	-
Pentabromobiphenyl	mg/kg	IEC 62321-6:2015, GC-MS	N.D.	N.D.	5	-
Hexabromobiphenyl	mg/kg	IEC 62321-6:2015, GC-MS	N.D.	N.D.	5	-
Heptabromobiphenyl	mg/kg	IEC 62321-6:2015, GC-MS	N.D.	N.D.	5	-
Octabromobiphenyl	mg/kg	IEC 62321-6:2015, GC-MS	N.D.	N.D.	5	-
Nonabromobiphenyl	mg/kg	IEC 62321-6:2015, GC-MS	N.D.	N.D.	5	-
Decabromobiphenyl	mg/kg	IEC 62321-6:2015, GC-MS	N.D.	N.D.	5	-
Sum of PBBs	mg/kg	-	N.D.	N.D.	-	1000
Monobromodiphenyl ether	mg/kg	IEC 62321-6:2015, GC-MS	N.D.	N.D.	5	-
Dibromodiphenyl ether	mg/kg	IEC 62321-6:2015, GC-MS	N.D.	N.D.	5	-
Tribromodiphenyl ether	mg/kg	IEC 62321-6:2015, GC-MS	N.D.	N.D.	5	-
Tetrabromodiphenyl ether	mg/kg	IEC 62321-6:2015, GC-MS	N.D.	N.D.	5	-
Pentabromodiphenyl ether	mg/kg	IEC 62321-6:2015, GC-MS	N.D.	N.D.	5	-
Hexabromodiphenyl ether	mg/kg	IEC 62321-6:2015, GC-MS	N.D.	N.D.	5	-
Heptabromodiphenyl ether	mg/kg	IEC 62321-6:2015, GC-MS	N.D.	N.D.	5	-
Octabromodiphenyl ether	mg/kg	IEC 62321-6:2015, GC-MS	N.D.	N.D.	5	-
Nonabromodiphenyl ether	mg/kg	IEC 62321-6:2015, GC-MS	N.D.	N.D.	5	-
Decabromodiphenyl ether	mg/kg	IEC 62321-6:2015, GC-MS	N.D.	N.D.	5	-
Sum of PBDEs	mg/kg	-	N.D.	N.D.	-	1000

This Test Report is issued by the Company subject to its General Conditions of Service printed overleaf or available on request and accessible at www.cpstlab.com. Attention is drawn to the limitations of liability, indemnification and jurisdictional issues defined therein. Unless otherwise stated the results shown in the test report refer only to the sample(s) tested. This test report cannot be reproduced, except in full, without prior written permission of the Company. Any unauthorized alteration, forgery or falsification of the content or appearance of this report is unlawful and offenders may be prosecuted to the fullest extent of the law.

Test Items	Unit	Test Method	Result		MDL	Limit
			No.15	No.16		
Lead (Pb)	mg/kg	IEC 62321-5:2013, ICP-OES	N.D.	N.D.	2	1000
Mercury (Hg)	mg/kg	IEC 62321-4:2013+A1:2017, ICP-OES	N.D.	N.D.	2	1000
Cadmium(Cd)	mg/kg	IEC 62321-5:2013, ICP-OES	N.D.	N.D.	2	100
Hexavalent Chromium (CrVI)	mg/kg	IEC 62321-7-2:2017, UV-VIS	N.D.	N.D.	2	1000
Monobromobiphenyl	mg/kg	IEC 62321-6:2015, GC-MS	N.D.	N.D.	5	-
Dibromobiphenyl	mg/kg	IEC 62321-6:2015, GC-MS	N.D.	N.D.	5	-
Tribromobiphenyl	mg/kg	IEC 62321-6:2015, GC-MS	N.D.	N.D.	5	-
Tetrabromobiphenyl	mg/kg	IEC 62321-6:2015, GC-MS	N.D.	N.D.	5	-
Pentabromobiphenyl	mg/kg	IEC 62321-6:2015, GC-MS	N.D.	N.D.	5	-
Hexabromobiphenyl	mg/kg	IEC 62321-6:2015, GC-MS	N.D.	N.D.	5	-
Heptabromobiphenyl	mg/kg	IEC 62321-6:2015, GC-MS	N.D.	N.D.	5	-
Octabromobiphenyl	mg/kg	IEC 62321-6:2015, GC-MS	N.D.	N.D.	5	-
Nonabromobiphenyl	mg/kg	IEC 62321-6:2015, GC-MS	N.D.	N.D.	5	-
Decabromobiphenyl	mg/kg	IEC 62321-6:2015, GC-MS	N.D.	N.D.	5	-
Sum of PBBs	mg/kg	-	N.D.	N.D.	-	1000
Monobromodiphenyl ether	mg/kg	IEC 62321-6:2015, GC-MS	N.D.	N.D.	5	-
Dibromodiphenyl ether	mg/kg	IEC 62321-6:2015, GC-MS	N.D.	N.D.	5	-
Tribromodiphenyl ether	mg/kg	IEC 62321-6:2015, GC-MS	N.D.	N.D.	5	-
Tetrabromodiphenyl ether	mg/kg	IEC 62321-6:2015, GC-MS	N.D.	N.D.	5	-
Pentabromodiphenyl ether	mg/kg	IEC 62321-6:2015, GC-MS	N.D.	N.D.	5	-
Hexabromodiphenyl ether	mg/kg	IEC 62321-6:2015, GC-MS	N.D.	N.D.	5	-
Heptabromodiphenyl ether	mg/kg	IEC 62321-6:2015, GC-MS	N.D.	N.D.	5	-
Octabromodiphenyl ether	mg/kg	IEC 62321-6:2015, GC-MS	N.D.	N.D.	5	-
Nonabromodiphenyl ether	mg/kg	IEC 62321-6:2015, GC-MS	N.D.	N.D.	5	-
Decabromodiphenyl ether	mg/kg	IEC 62321-6:2015, GC-MS	N.D.	N.D.	5	-
Sum of PBDEs	mg/kg	-	N.D.	N.D.	-	1000

This Test Report is issued by the Company subject to its General Conditions of Service printed overleaf or available on request and accessible at www.cpstlab.com. Attention is drawn to the limitations of liability, indemnification and jurisdictional issues defined therein. Unless otherwise stated the results shown in the test report refer only to the sample(s) tested. This test report cannot be reproduced, except in full, without prior written permission of the Company. Any unauthorized alteration, forgery or falsification of the content or appearance of this report is unlawful and offenders may be prosecuted to the fullest extent of the law.

Test Items	Unit	Test Method	Result		MDL	Limit
			No.17	No.18		
Lead (Pb)	mg/kg	IEC 62321-5:2013, ICP-OES	N.D.	N.D.	2	1000
Mercury (Hg)	mg/kg	IEC 62321-4:2013+A1:2017, ICP-OES	N.D.	N.D.	2	1000
Cadmium(Cd)	mg/kg	IEC 62321-5:2013, ICP-OES	N.D.	N.D.	2	100
Hexavalent Chromium (CrVI)	mg/kg	IEC 62321-7-2:2017, UV-VIS	N.D.	N.D.	2	1000
Monobromobiphenyl	mg/kg	IEC 62321-6:2015, GC-MS	N.D.	N.D.	5	-
Dibromobiphenyl	mg/kg	IEC 62321-6:2015, GC-MS	N.D.	N.D.	5	-
Tribromobiphenyl	mg/kg	IEC 62321-6:2015, GC-MS	N.D.	N.D.	5	-
Tetrabromobiphenyl	mg/kg	IEC 62321-6:2015, GC-MS	N.D.	N.D.	5	-
Pentabromobiphenyl	mg/kg	IEC 62321-6:2015, GC-MS	N.D.	N.D.	5	-
Hexabromobiphenyl	mg/kg	IEC 62321-6:2015, GC-MS	N.D.	N.D.	5	-
Heptabromobiphenyl	mg/kg	IEC 62321-6:2015, GC-MS	N.D.	N.D.	5	-
Octabromobiphenyl	mg/kg	IEC 62321-6:2015, GC-MS	N.D.	N.D.	5	-
Nonabromobiphenyl	mg/kg	IEC 62321-6:2015, GC-MS	N.D.	N.D.	5	-
Decabromobiphenyl	mg/kg	IEC 62321-6:2015, GC-MS	N.D.	N.D.	5	-
Sum of PBBs	mg/kg	-	N.D.	N.D.	-	1000
Monobromodiphenyl ether	mg/kg	IEC 62321-6:2015, GC-MS	N.D.	N.D.	5	-
Dibromodiphenyl ether	mg/kg	IEC 62321-6:2015, GC-MS	N.D.	N.D.	5	-
Tribromodiphenyl ether	mg/kg	IEC 62321-6:2015, GC-MS	N.D.	N.D.	5	-
Tetrabromodiphenyl ether	mg/kg	IEC 62321-6:2015, GC-MS	N.D.	N.D.	5	-
Pentabromodiphenyl ether	mg/kg	IEC 62321-6:2015, GC-MS	N.D.	N.D.	5	-
Hexabromodiphenyl ether	mg/kg	IEC 62321-6:2015, GC-MS	N.D.	N.D.	5	-
Heptabromodiphenyl ether	mg/kg	IEC 62321-6:2015, GC-MS	N.D.	N.D.	5	-
Octabromodiphenyl ether	mg/kg	IEC 62321-6:2015, GC-MS	N.D.	N.D.	5	-
Nonabromodiphenyl ether	mg/kg	IEC 62321-6:2015, GC-MS	N.D.	N.D.	5	-
Decabromodiphenyl ether	mg/kg	IEC 62321-6:2015, GC-MS	N.D.	N.D.	5	-
Sum of PBDEs	mg/kg	-	N.D.	N.D.	-	1000

This Test Report is issued by the Company subject to its General Conditions of Service printed overleaf or available on request and accessible at www.cpstlab.com. Attention is drawn to the limitations of liability, indemnification and jurisdictional issues defined therein. Unless otherwise stated the results shown in the test report refer only to the sample(s) tested. This test report cannot be reproduced, except in full, without prior written permission of the Company. Any unauthorized alteration, forgery or falsification of the content or appearance of this report is unlawful and offenders may be prosecuted to the fullest extent of the law.

Test Items	Unit	Test Method	Result	MDL	Limit
			No.19		
Lead (Pb)	mg/kg	IEC 62321-5:2013, ICP-OES	N.D.	2	1000
Mercury (Hg)	mg/kg	IEC 62321-4:2013+A1:2017, ICP-OES	N.D.	2	1000
Cadmium(Cd)	mg/kg	IEC 62321-5:2013, ICP-OES	N.D.	2	100
Hexavalent Chromium (CrVI)	mg/kg	IEC 62321-7-2:2017, UV-VIS	N.D.	2	1000
Monobromobiphenyl	mg/kg	IEC 62321-6:2015, GC-MS	N.D.	5	-
Dibromobiphenyl	mg/kg	IEC 62321-6:2015, GC-MS	N.D.	5	-
Tribromobiphenyl	mg/kg	IEC 62321-6:2015, GC-MS	N.D.	5	-
Tetrabromobiphenyl	mg/kg	IEC 62321-6:2015, GC-MS	N.D.	5	-
Pentabromobiphenyl	mg/kg	IEC 62321-6:2015, GC-MS	N.D.	5	-
Hexabromobiphenyl	mg/kg	IEC 62321-6:2015, GC-MS	N.D.	5	-
Heptabromobiphenyl	mg/kg	IEC 62321-6:2015, GC-MS	N.D.	5	-
Octabromobiphenyl	mg/kg	IEC 62321-6:2015, GC-MS	N.D.	5	-
Nonabromobiphenyl	mg/kg	IEC 62321-6:2015, GC-MS	N.D.	5	-
Decabromobiphenyl	mg/kg	IEC 62321-6:2015, GC-MS	N.D.	5	-
Sum of PBBs	mg/kg	-	N.D.	-	1000
Monobromodiphenyl ether	mg/kg	IEC 62321-6:2015, GC-MS	N.D.	5	-
Dibromodiphenyl ether	mg/kg	IEC 62321-6:2015, GC-MS	N.D.	5	-
Tribromodiphenyl ether	mg/kg	IEC 62321-6:2015, GC-MS	N.D.	5	-
Tetrabromodiphenyl ether	mg/kg	IEC 62321-6:2015, GC-MS	N.D.	5	-
Pentabromodiphenyl ether	mg/kg	IEC 62321-6:2015, GC-MS	N.D.	5	-
Hexabromodiphenyl ether	mg/kg	IEC 62321-6:2015, GC-MS	N.D.	5	-
Heptabromodiphenyl ether	mg/kg	IEC 62321-6:2015, GC-MS	N.D.	5	-
Octabromodiphenyl ether	mg/kg	IEC 62321-6:2015, GC-MS	N.D.	5	-
Nonabromodiphenyl ether	mg/kg	IEC 62321-6:2015, GC-MS	N.D.	5	-
Decabromodiphenyl ether	mg/kg	IEC 62321-6:2015, GC-MS	N.D.	5	-
Sum of PBDEs	mg/kg	-	N.D.	-	1000

- Note:
1. mg/kg = milligram per kilogram = ppm
 2. N.D. = Not Detected (< MDL)
 3. MDL = Method Detection Limit
 4. "-" = Not Regulated

This Test Report is issued by the Company subject to its General Conditions of Service printed overleaf or available on request and accessible at www.cpstlab.com. Attention is drawn to the limitations of liability, indemnification and jurisdictional issues defined therein. Unless otherwise stated the results shown in the test report refer only to the sample(s) tested. This test report cannot be reproduced, except in full, without prior written permission of the Company. Any unauthorized alteration, forgery or falsification of the content or appearance of this report is unlawful and offenders may be prosecuted to the fullest extent of the law.

Test Report

No. C190220048001

Date: Feb 25, 2019 Page 16 of 20

Di-(2-ethylhexyl) phthalate(DEHP), Benzylbutyl phthalate(BBP), Dibutyl phthalate (DBP), Diisobutyl phthalate (DIBP) Content—RoHS Directive 2011/65/EU Annex II amending Annex (EU)2015/863 and amending Annex (EU)2017/2102

Test method: With reference to IEC 62321-8:2017, analysis was performed by GC-MS.

Test Items	Unit	Result				MDL	Limit
		No.1	No.2	No.3	No.4		
Di-(2-ethylhexyl) phthalate (DEHP)	mg/kg	N.D.	N.D.	N.D.	N.D.	50	1000
Benzylbutyl phthalate (BBP)	mg/kg	N.D.	N.D.	N.D.	N.D.	50	1000
Dibutyl phthalate (DBP)	mg/kg	N.D.	N.D.	N.D.	N.D.	50	1000
Diisobutyl phthalate(DIBP)	mg/kg	N.D.	N.D.	N.D.	N.D.	50	1000

Test Items	Unit	Result				MDL	Limit
		No.5	No.6	No.7	No.8		
Di-(2-ethylhexyl) phthalate (DEHP)	mg/kg	N.D.	N.D.	N.D.	N.D.	50	1000
Benzylbutyl phthalate (BBP)	mg/kg	N.D.	N.D.	N.D.	N.D.	50	1000
Dibutyl phthalate (DBP)	mg/kg	N.D.	N.D.	N.D.	N.D.	50	1000
Diisobutyl phthalate(DIBP)	mg/kg	N.D.	N.D.	N.D.	N.D.	50	1000

Test Items	Unit	Result				MDL	Limit
		No.9	No.10	No.11	No.12		
Di-(2-ethylhexyl) phthalate (DEHP)	mg/kg	N.D.	N.D.	N.D.	N.D.	50	1000
Benzylbutyl phthalate (BBP)	mg/kg	N.D.	N.D.	N.D.	N.D.	50	1000
Dibutyl phthalate (DBP)	mg/kg	N.D.	N.D.	N.D.	N.D.	50	1000
Diisobutyl phthalate(DIBP)	mg/kg	N.D.	N.D.	N.D.	N.D.	50	1000

This Test Report is issued by the Company subject to its General Conditions of Service printed overleaf or available on request and accessible at www.cpstlab.com. Attention is drawn to the limitations of liability, indemnification and jurisdictional issues defined therein. Unless otherwise stated the results shown in the test report refer only to the sample(s) tested. This test report cannot be reproduced, except in full, without prior written permission of the Company. Any unauthorized alteration, forgery or falsification of the content or appearance of this report is unlawful and offenders may be prosecuted to the fullest extent of the law.

Test Report

No. C190220048001

Date: Feb 25, 2019

Page 17 of 20

Test Items	Unit	Result				MDL	Limit
		No.13	No.14	No.15	No.16		
Di-(2-ethylhexyl) phthalate (DEHP)	mg/kg	N.D.	N.D.	N.D.	N.D.	50	1000
Benzylbutyl phthalate (BBP)	mg/kg	N.D.	N.D.	N.D.	N.D.	50	1000
Dibutyl phthalate (DBP)	mg/kg	N.D.	N.D.	N.D.	N.D.	50	1000
Diisobutyl phthalate(DIBP)	mg/kg	N.D.	N.D.	N.D.	N.D.	50	1000

Test Items	Unit	Result			MDL	Limit
		No.17	No.18	No.19		
Di-(2-ethylhexyl) phthalate (DEHP)	mg/kg	N.D.	N.D.	N.D.	50	1000
Benzylbutyl phthalate (BBP)	mg/kg	N.D.	N.D.	N.D.	50	1000
Dibutyl phthalate (DBP)	mg/kg	N.D.	N.D.	N.D.	50	1000
Diisobutyl phthalate(DIBP)	mg/kg	N.D.	N.D.	N.D.	50	1000

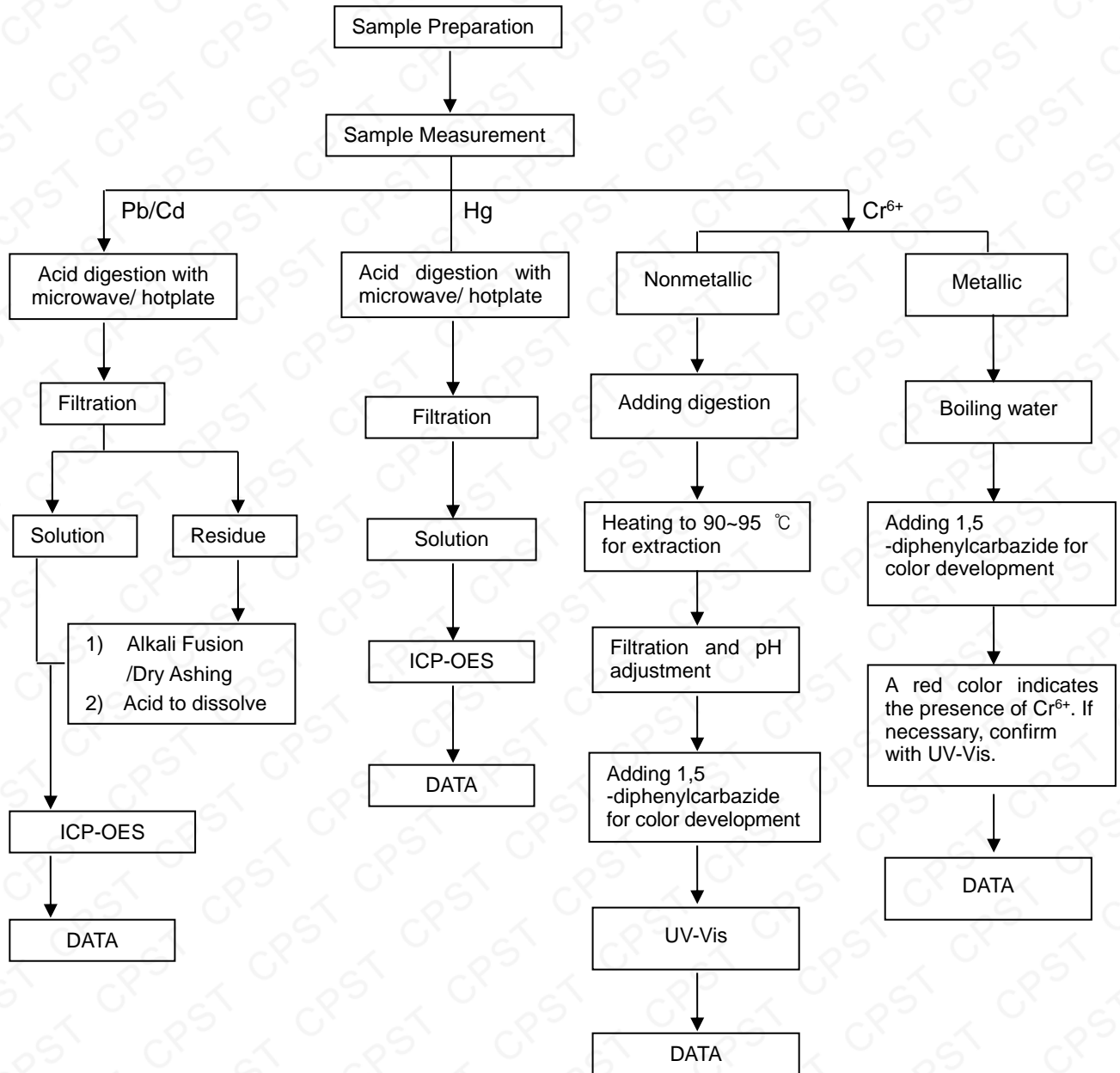
Note:

1. mg/kg = milligram per kilogram = ppm
2. N.D. = Not Detected (<MDL)
3. MDL = Method detection limit

This Test Report is issued by the Company subject to its General Conditions of Service printed overleaf or available on request and accessible at www.cpstlab.com. Attention is drawn to the limitations of liability, indemnification and jurisdictional issues defined therein. Unless otherwise stated the results shown in the test report refer only to the sample(s) tested. This test report cannot be reproduced, except in full, without prior written permission of the Company. Any unauthorized alteration, forgery or falsification of the content or appearance of this report is unlawful and offenders may be prosecuted to the fullest extent of the law.

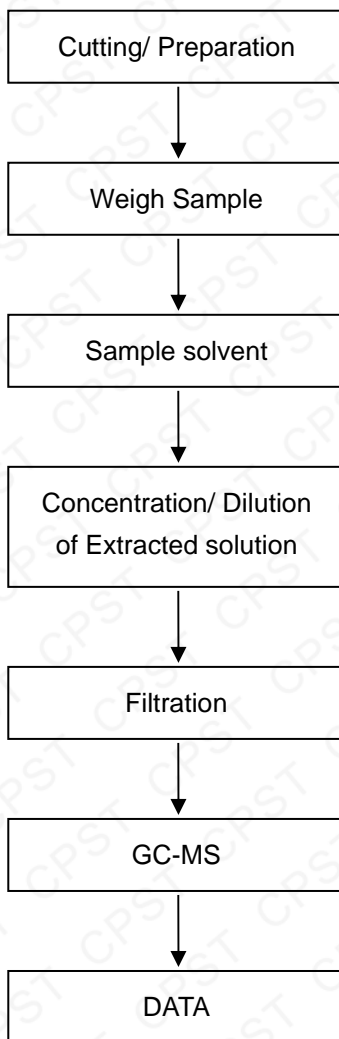
Pb/Cd/Hg/Cr⁶⁺ Testing Flow Chart

- 1) These samples were dissolved totally by pre-conditioning method according to below flow chart.
(Cr⁶⁺ test method excluded)



This Test Report is issued by the Company subject to its General Conditions of Service printed overleaf or available on request and accessible at www.cpstlab.com. Attention is drawn to the limitations of liability, indemnification and jurisdictional issues defined therein. Unless otherwise stated the results shown in the test report refer only to the sample(s) tested. This test report cannot be reproduced, except in full, without prior written permission of the Company. Any unauthorized alteration, forgery or falsification of the content or appearance of this report is unlawful and offenders may be prosecuted to the fullest extent of the law.

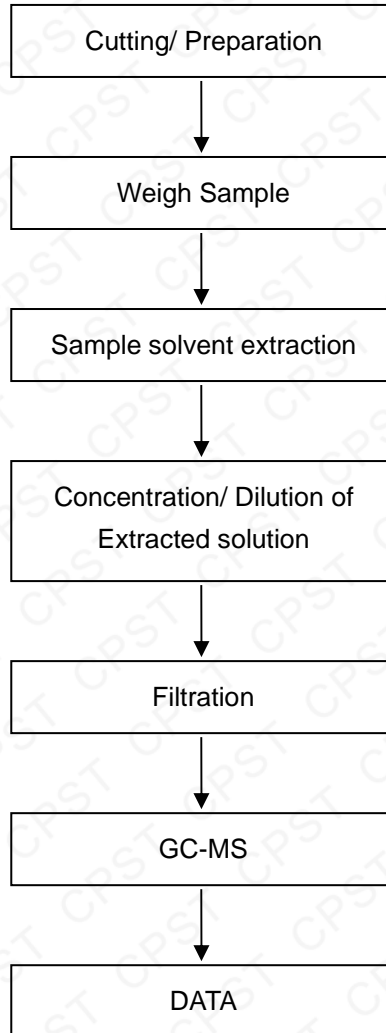
PBBs/PBDEs Testing Flow Chart



This Test Report is issued by the Company subject to its General Conditions of Service printed overleaf or available on request and accessible at www.cpstlab.com. Attention is drawn to the limitations of liability, indemnification and jurisdictional issues defined therein. Unless otherwise stated the results shown in the test report refer only to the sample(s) tested. This test report cannot be reproduced, except in full, without prior written permission of the Company. Any unauthorized alteration, forgery or falsification of the content or appearance of this report is unlawful and offenders may be prosecuted to the fullest extent of the law.



Phthalates Testing Flow Chart



*** End of Report ***

This Test Report is issued by the Company subject to its General Conditions of Service printed overleaf or available on request and accessible at www.cpstlab.com. Attention is drawn to the limitations of liability, indemnification and jurisdictional issues defined therein. Unless otherwise stated the results shown in the test report refer only to the sample(s) tested. This test report cannot be reproduced, except in full, without prior written permission of the Company. Any unauthorized alteration, forgery or falsification of the content or appearance of this report is unlawful and offenders may be prosecuted to the fullest extent of the law.